

COLUMN BARRIER BP

COLUMN BARRIER

DESIGNED TO PROTECT STRUCTURAL COLUMNS THAT ARE EXPOSED TO HIGH ENERGY SHOCKS, ITS MODULAR STRUCTURE ALLOWS CONFIGURATIONS ACCORDING TO THE CUSTOMER'S SPECIFIC REQUIREMENTS AND THE HEIGHTS OF PROTECTION, COMBINING THE RESISTANCE OF STEEL AND THE FLEXIBILITY OF THE RUBBER MODULES.

APPLICATIONS

STRUCTURAL COLUMNS EXPOSED TO HIGH ENERGY IMPACTS.

TECHNICAL INFORMATION

Effective protection height	Up to 110cm
Length	According to Requirement
T ° Range	-20°C a 70°C
Surface Finish	Yellow Electrostatic Paint
Anchor Type	1/2" x 4 1/4" Anchor Bolt (4 units per base)
Materiality	ASTM A36 Steel / NR Rubber

IMPACT ABSORPTION

ENERGY ABSORPTION THANKS TO THE MATERIAL'S ACTIVE MEMORY



4,0Ton

X



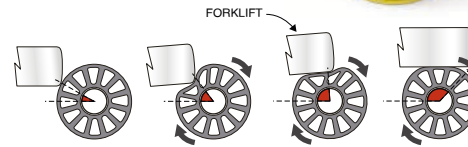
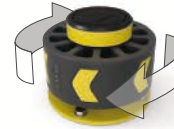
5,3 Mph



IMPACT OVER THE RUBBER PROTECTED BASE

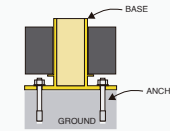
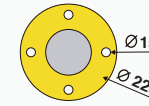
ROTATION

FUNCTIONALITY TO REDIRECT THE FORKLIFT FORWARD DIRECTION



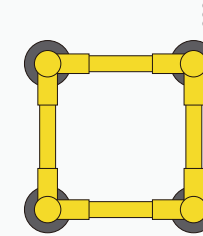
DIMENSIONS (mm)

BASE

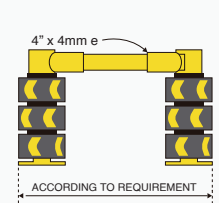


ANCHOR FIXING
1/2" X 4" 1/4"
EXPANSION BOLT

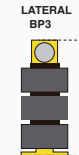
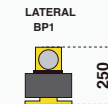
TOP



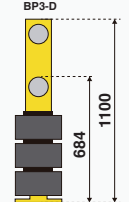
FRONT



PROTECTION HEIGHT
ACCORDING TO MODEL

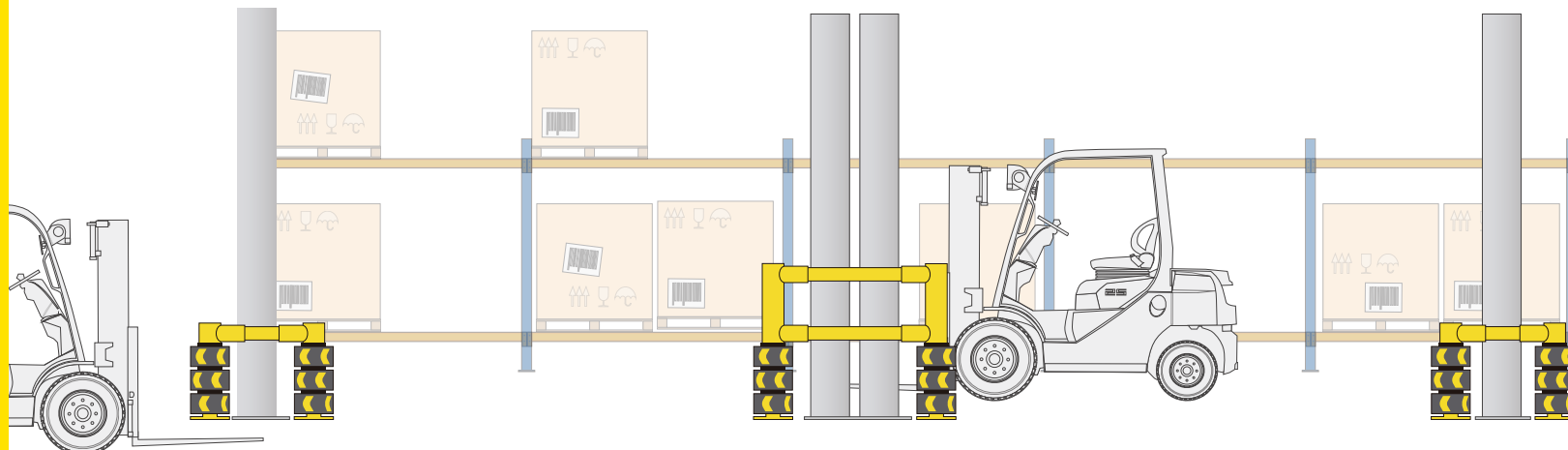
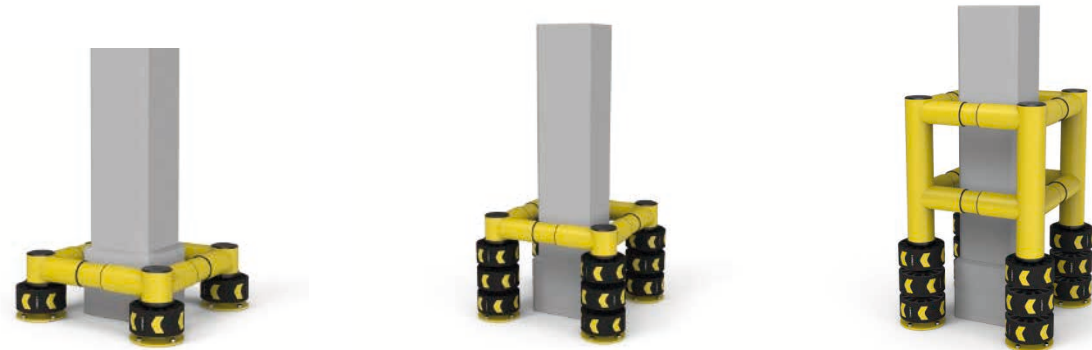


LATERAL
BP3-D



PATENT PENDING

SOL N°CL201903518 - 02/12/2019



ENNAT
INDUSTRIAL PROTECTIONS

www.ennatgroup.com