

DOUBLE BARRIER B3-D

DOUBLE BARRIER

IT CONSTITUTES THE MOST ROBUST BARRIER OF THE LINE, ITS DESIGN RESPONDS TO THE NEED TO PROTECT THE FLOW OF FORKLIFTS IN DOUBLE-WAY CIRCULATION AREAS. ITS THICK CROSSBODIES PREVENT THAT BOTH THE CARGO THAT IS TRANSPORTED AND THE FORKLIFT ITSELF FROM EXCEEDING THE BARRIER TOWARDS THE OPPOSITE WAY. THE LOWER ZONE OF THE BARRIER IS ABLE TO ABSORB AND REDIRECT ANY CHANGE IN THE TRACK OF THE FORKLIFT WITHOUT PROBLEMS.

APLICACIONES

FORKLIFT FLOWS SEGREGATION, HIGH FLOW ZONE SEGMENTATION, STRUCTURES REQUIRING ADDITIONAL PROTECTION, ETC.

TECHNICAL INFORMATION

Effective Protection Height	Up to 110cm
Length	According to Requirement
T° Range	-20°C a 70°C
Surface Finish	Yellow Electrostatic Paint
Anchor Type	1/2" x 4 1/4" Anchor Bolt (4 units per base)
Materiality	ASTM A36 Steel / NR Rubber

IMPACT ABSORPTION

ENERGY ABSORPTION THANKS TO THE MATERIAL'S ACTIVE MEMORY



4,0Ton



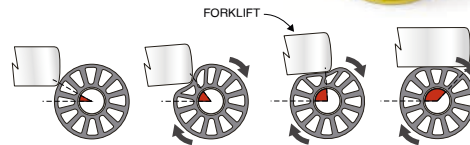
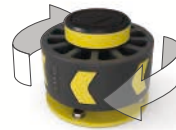
5,3 Mph

IMPACT OVER THE RUBBER PROTECTED BASE



ROTATION

FUNCTIONALITY TO REDIRECT THE FORKLIFT FORWARD DIRECTION

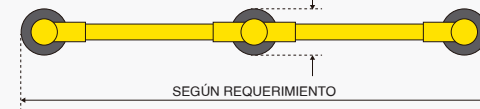


PATENT PENDING

SOL N°CL201903518 - 02/12/2019

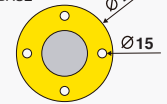
DIMENSIONES (mm)

SUPERIOR

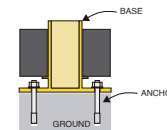
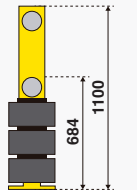
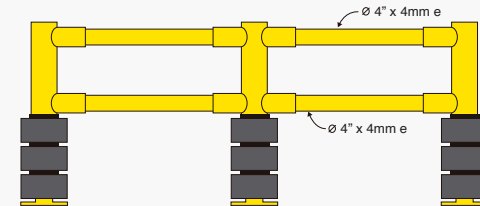


FRENTE

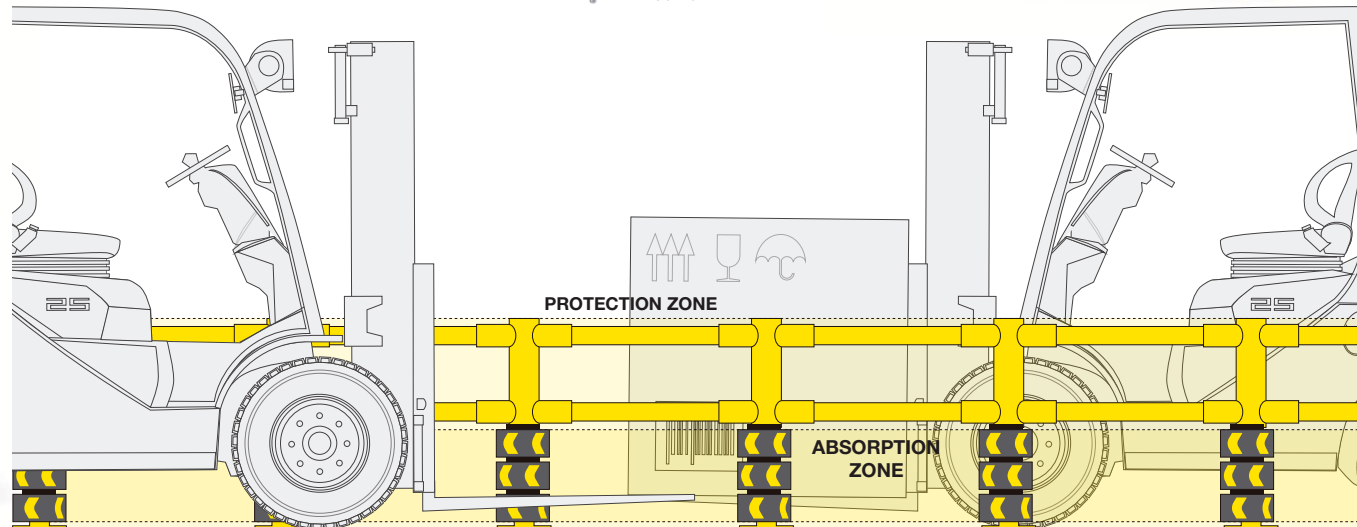
BASE



LATERAL



ANCHOR FIXING
1/2 X 4" 1/4
EXPANSION BOLT



* LENGTHS AND CONFIGURATION ACCORDING TO SPECIFIC REQUIREMENTS

