

ROLLER BARRIER R

ROLLER BARRIER

THE ROLLER BARRIER IS AN INNOVATIVE PROTECTION BARRIER SPECIFICALLY DESIGNED FOR INDUSTRIAL ENVIRONMENTS THAT REQUIRE A ROBUST AND EFFECTIVE IMPACT SOLUTION. THIS SYSTEM STANDS OUT FOR ITS ABILITY TO DEFLECT IMPACTS ALONG ITS STRUCTURE USING ROTATING RUBBER MODULES, WHICH SPIN AND REDIRECT THE FLOW WHILE ABSORBING THE IMPACT ENERGY. THIS MAKES THE ROLLER BARRIER IDEAL FOR PROTECTING AND DELINEATING FORKLIFT TRAFFIC AREAS AND PROVIDING A PROTECTION SOLUTION FOR LOW-HEIGHT IMPACTS.

APPLICATIONS

THE ROLLER BARRIER DEFLECTS IMPACTS WITH ROTATING RUBBER MODULES, IDEAL FOR FORKLIFT TRAFFIC AREAS, LOADING ZONES, DISTRIBUTION CENTERS, PRODUCTION AND STORAGE AREAS, AND OFFERS LOW-HEIGHT IMPACT PROTECTION IN INDUSTRIAL WAREHOUSES AND TRAFFIC ZONES.

TECHNICAL INFORMATION

Effective Protection	5.5" or 11"
Available Lengths	17.7", 26.7", 35.8"
Materials	Steel structure with rotating rubber modules
Finish	Yellow electrostatic paint, corrosion-resistant and highly visible

IMPACT ABSORPTION

ENERGY ABSORPTION THANKS TO THE ACTIVE MEMORY OF THE MATERIAL

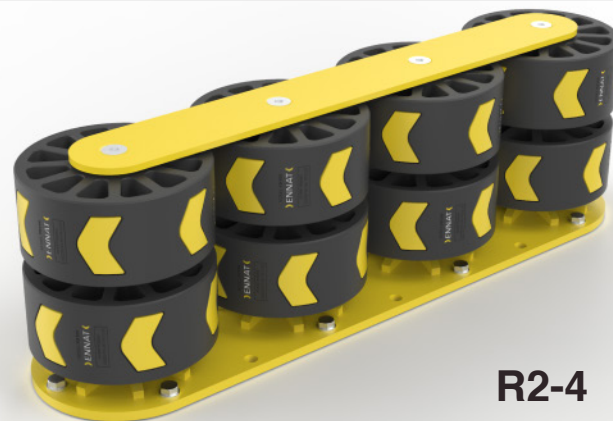


4,0Ton



8,5 Km/h

IMPACT GENERATED ON THE BASE WITH RUBBER PROTECTION



R2-4



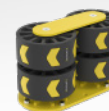
R1-3



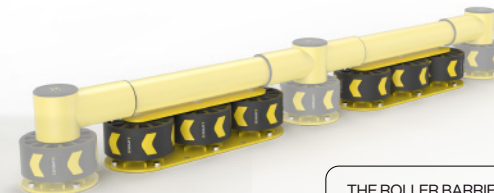
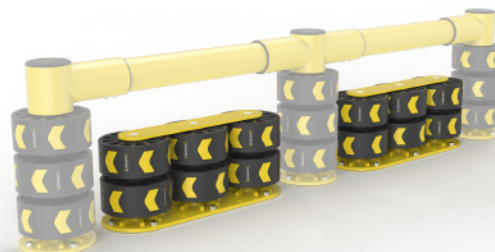
R1-2



R2-3



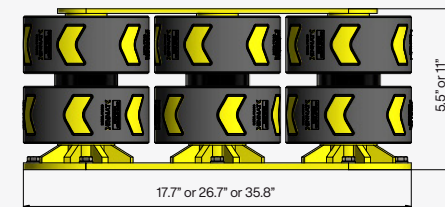
R2-2



THE ROLLER BARRIER IS ALSO COMPATIBLE WITH OTHER BARRIER BASES

DIMENSIONS

Front



Top

