

# LOW BARRIER B1

## LOW BARRIER

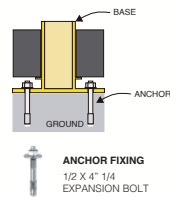
THE LOWEST OF THE ENNAT BARRIERS, CONSTITUTES A CIRCULATION GUIDE FOR FORKLIFTS THAT TRANSIT WITHIN A DISTRIBUTION CENTER AND IS ABLE TO AVOID POTENTIAL STRIKES AGAINST WEAK OR SENSITIVE STRUCTURES, SUCH AS FRAMES OF CAMINAR ZONES DELIMITATION ZONES FOR STORAGE AREAS SINCE ITS LOW STRUCTURE DOES NOT VISUALLY OBSTACLE THE AREA, BUT IT IS ABLE TO RESIST THE BLOWS OF THE COLLECTION OPERATION.

### APPLICATIONS

DEMARCATON OF AREAS, PROTECTION OF COLD CHAMBER PANELS, SEGMENTATION OF STORAGE AREAS, AMONG OTHERS.

## TECHNICAL INFORMATION

Effective Protection Height	Up to 25cm
Length	According to Requirement
T° Range	-20°C a 70°C
Surface Finish	Yellow Electrostatic Paint
Anchor Type	1/2" x 4 1/4" Anchor Bolt (4 units per base)
Materiality	Steel SAE 23 / NR Rubber



## IMPACT ABSORPTION

ENERGY ABSORPTION THANKS TO THE MATERIAL'S ACTIVE MEMORY



4,0Ton



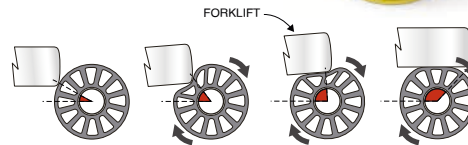
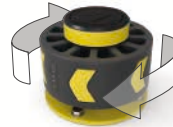
5,3 Mph

IMPACT OVER THE RUBBER PROTECTED BASE

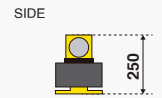
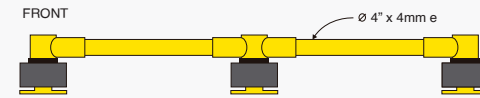
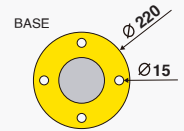
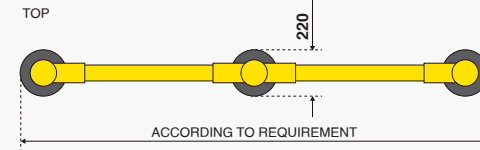


## ROTATION

FUNCTIONALITY TO REDIRECT THE FORKLIFT FORWARD DIRECTION

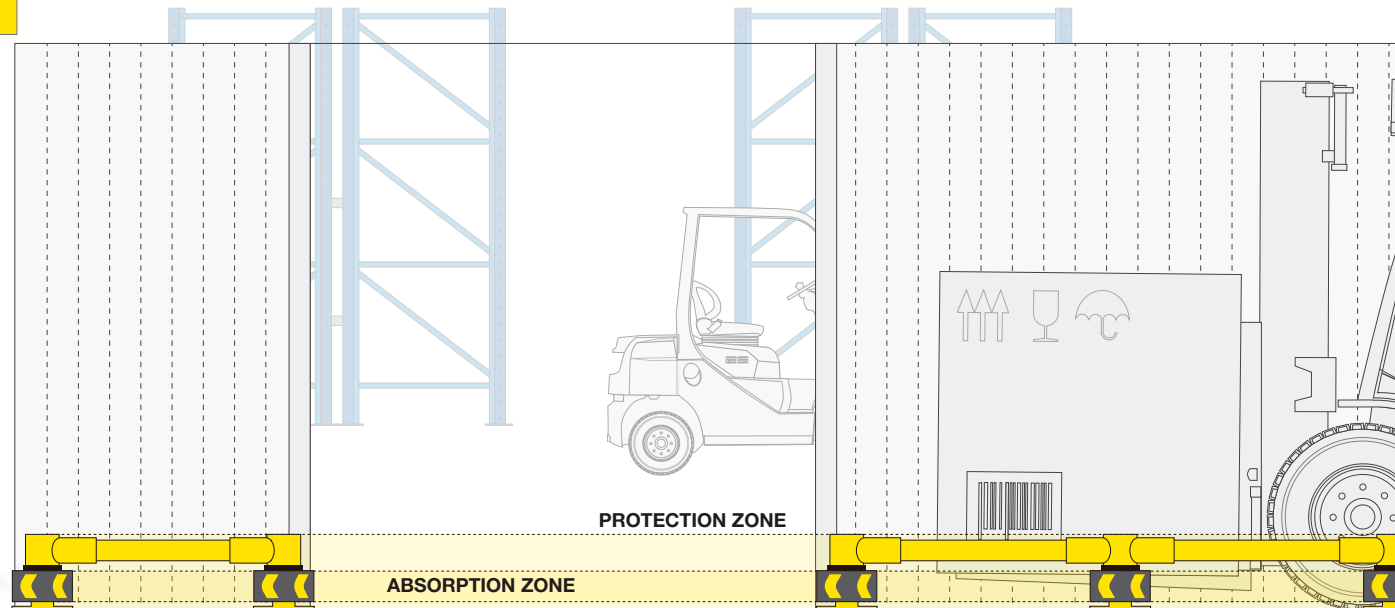


## DIMENSIONS (mm)

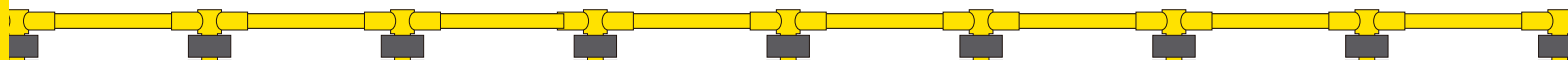


PATENT PENDING

SOL N°CL201903518 - 02/12/2019



\* LENGTHS AND CONFIGURATION ACCORDING TO SPECIFIC REQUIREMENTS



**ENNAT**  
INDUSTRIAL PROTECTIONS

www.ennatgroup.com