

# COLUMN GUARDRAIL BP

## COLUMN GUARDRAIL

DESIGNED TO PROTECT STRUCTURAL COLUMNS THAT ARE EXPOSED TO HIGH ENERGY SHOCKS, ITS MODULAR STRUCTURE ALLOWS CONFIGURATIONS ACCORDING TO THE CUSTOMER'S SPECIFIC REQUIREMENTS AND THE HEIGHTS OF PROTECTION, COMBINING THE RESISTANCE OF STEEL AND THE FLEXIBILITY OF THE RUBBER MODULES.

### APPLICATIONS

STRUCTURAL COLUMNS EXPOSED TO HIGH ENERGY IMPACTS.

## TECHNICAL INFORMATION

Effective protection height	Up to 110cm
Length	According to Requirement
T ° Range	-20°C a 70°C
Surface Finish	Yellow Electrostatic Paint
Anchor Type	1/2" x 4 1/4" Anchor Bolt (4 units per base)
Materiality	ASTM A36 Steel / NR Rubber



**PATENT PENDING**

SOL N°CL201903518 - 02/12/2019

## IMPACT ABSORPTION

ENERGY ABSORPTION THANKS TO THE MATERIAL'S ACTIVE MEMORY

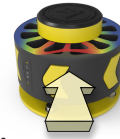


4,0Ton

X



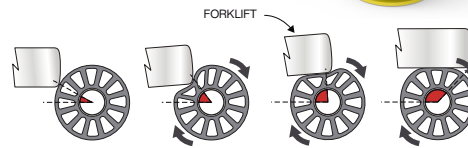
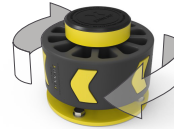
5,3 Mph



IMPACT OVER THE RUBBER PROTECTED BASE

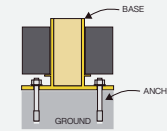
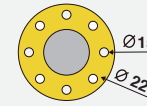
## ROTATION

FUNCTIONALITY TO REDIRECT THE FORKLIFT FORWARD DIRECTION



## DIMENSIONS (mm)

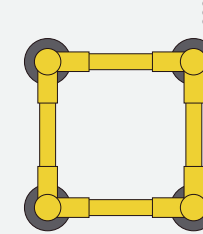
BASE



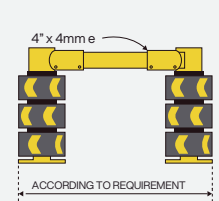
ANCHOR FIXING  
1/2" x 4 1/4"  
EXPANSION BOLT

X4 minimum  
4 anchors per base

TOP

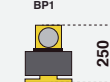


FRONT

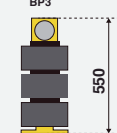


PROTECTION HEIGHT  
ACCORDING TO MODEL

LATERAL  
BP1



LATERAL  
BP3



LATERAL  
BP3-D

